

LIMITED TIME OFFER
**ENDS
July 31**

Your New Home *Is Closer* Than You Think

Move in sooner with LESS required at closing and more money in your pocket!



ONLY
\$5,000
DOWN

Move in sooner with less required at closing!

3.99%*

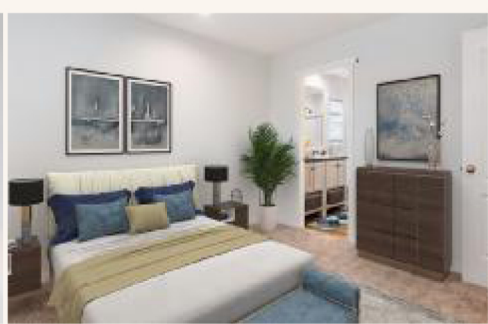
FIXED RATE
FINANCING

Lock in a lower rate, live with a lower payment.

No Lot
Rent Until
2027

That's months of extra savings in your pocket!

Beautiful New, Move-in Ready Homes Available Now.



Contact our home sales team for details
(833) 231-4668



See All
Homes
For Sale

Offer available on new home purchases only from existing inventory at participating communities. Limited Time Only. Offer may be withdrawn at any time. Must close on your new home by July 31, 2026. On approved credit through a third party lender. Some restrictions apply. Buyer to pay one year's insurance up front. Not offered in conjunction with any other promotion. All buyers must apply for residency in our community. This community is an Equal Housing Community. Financing provided by Kelly Mortgage, Inc. 23011 Moulton Parkway, Suite F-3, Laguna Hills, CA 92653. Corporate NMLS Unique Identifier #1594896 Company DRE:02030101.

